

**Residential Lettings
Property Management Specialists**

PO Box 301, Upminster, Essex, RM14 9DQ
01277 523358
enquiries@waderesidential.com
www.waderesidential.com

NEW TOWER BUILDINGS, WAPPING HIGH STREET, LONDON. E1W 2PD

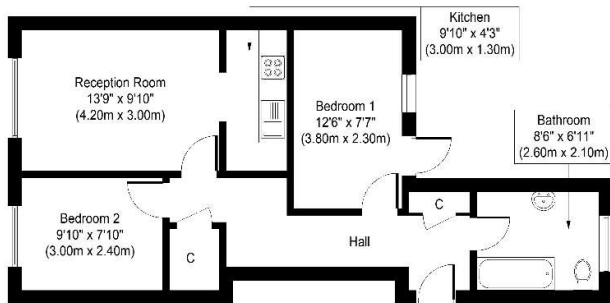


£1,550.00 PCM

A GROUND FLOOR TWO BEDROOM FLAT IN A PERIOD BUILDING CLOSE TO THE RIVER THAMES AND WITHIN WALKING DISTANCE OF WAPPING STATION. WOULD SUIT A PROFESSIONAL COUPLE. EPC RATING C. COUNCIL TAX BAND D. DAMAGES DEPOSIT £1,550.00 (PLEASE NOTE: PHOTOGRAPHS ARE FROM BEFORE EXISTING TENANCY)

- GROUND FLOOR FLAT
- CLOSE TO RIVER THAMES
- KITCHEN AREA OFF OF LOUNGE
- BATHROOM/WC
- PERIOD BUILDING
- GAS CENTRAL HEATING
- COMMUNAL GARDEN
- SUIT PROFESSIONAL COUPLE





Approximate Floor Area
 556 Sq. ft.
 (51.7 Sq. m.)

Whilst every attempt has been made to ensure the accuracy of the floor plan contained here, measurements of doors, windows, rooms and any other items are approximate and no responsibility is taken for any error, omission, or mis-statement. This plan is for illustrative purposes only and should be used as such by any prospective purchaser or tenant. The services, systems and appliances shown have not been tested and no guarantee as to their operability or efficiency can be given.

Copyright V360 Ltd 2021 | www.houseviz.com

