

Residential Lettings
Property Management Specialists

PO Box 301, Upminster, Essex, RM14 9DQ
01277 523358
enquiries@waderesidential.com
www.waderesidential.com

LESLIE HITCHCOCK HOUSE, MINTER ROAD, BARKING, ESSEX. IG11 0TH

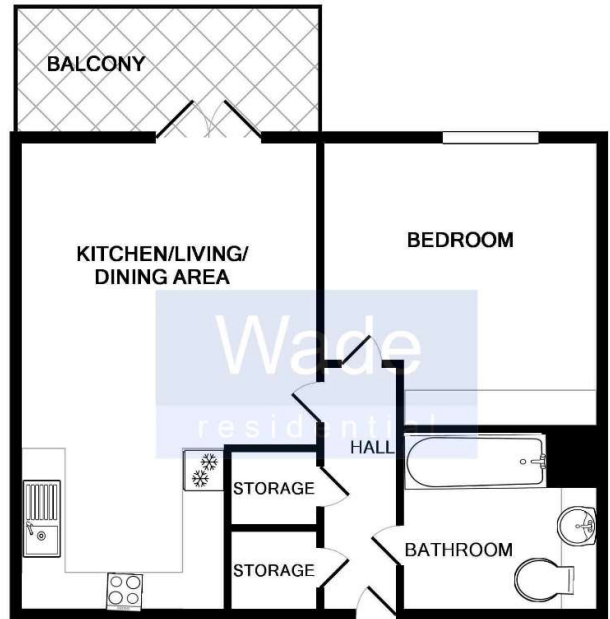
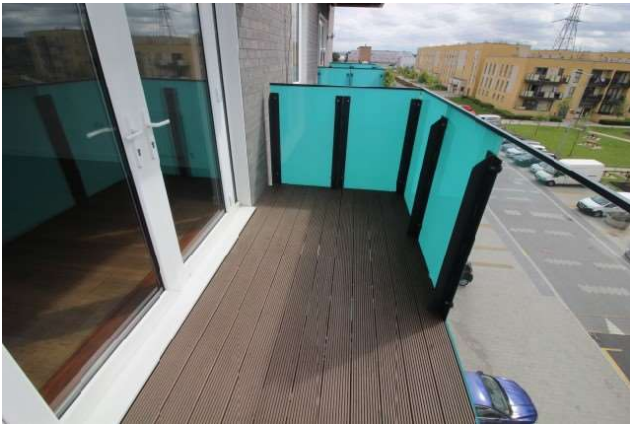


£1,100 PCM

WE ARE PLEASED TO OFFER FOR RENT THIS MODERN ONE BEDROOM APARTMENT. LOCATED IN THE POPULAR BARKING RIVERSIDE DEVELOPMENT WITH REGULAR BUS SERVICES TO BARKING AND BEING WITHIN EASY ACCESS OF THE A13, PROVIDING EXCELLENT ROAD LINKS TO THE SURROUNDING AREAS. EPC RATING B.

- DOUBLE BEDROOM WITH FITTED WARDROBE
- FITTED KITCHEN WITH APPLIANCES
- BATHROOM/WC
- OPEN PLAN LOUNGE/KITCHEN
- BALCONY
- SECURE PARKING





Whilst every attempt has been made to ensure the accuracy of the floor plan contained here, measurements of doors, windows, rooms and any other items are approximate and no responsibility is taken for any error, omission, or mis-statement. This plan is for illustrative purposes only and should be used as such by any prospective purchaser. The services, systems and appliances shown have not been tested and no guarantee as to their operability or efficiency can be given
Made with Metropix ©2017